



Product Brochure



CRIMSON RISE

Tailor your paint



Who are we?

Crimson Rise is a paint manufacturing expert that specializes in floor coating. Our product range encompasses MMA Road Paint, Epoxy, PU, and Roadline paint, which offer a spectrum of colours tailored to meet market demands. Backed by a robust R&D team, we ensure continuous enhancement for top-notch quality. Complemented by an innovative management team, our commitment extends beyond products, delivering unparalleled service to our valued customers.

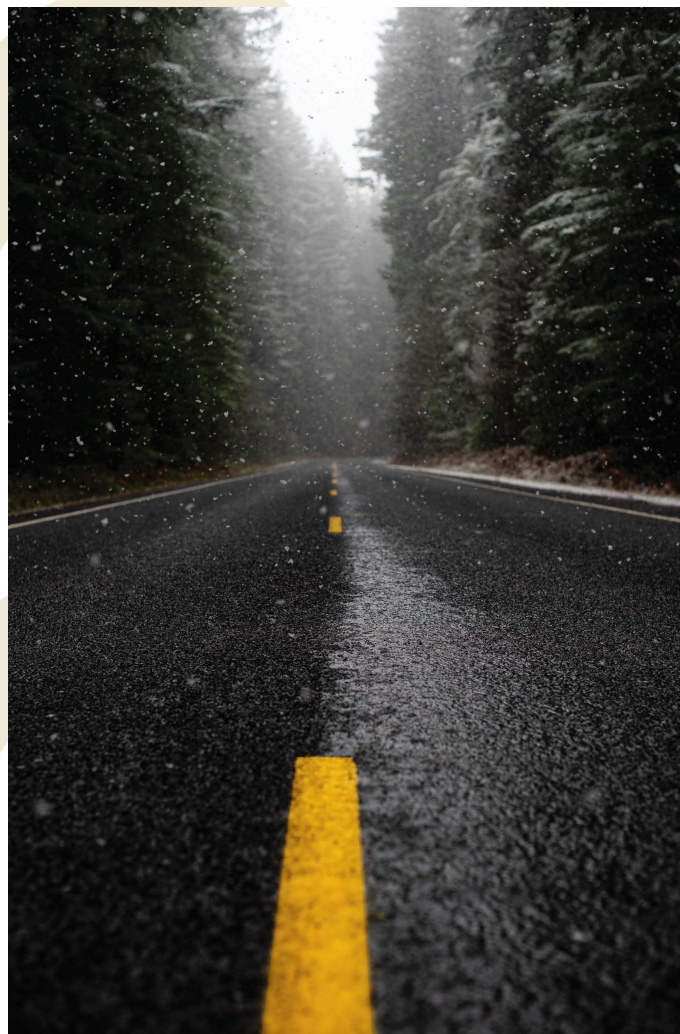
Why Crimson?

Reasonable Cost

Innovative Management

Solution for Safety

Excellent Quality



Our Products

i. Roadline Paint

High Solid Fast Dry Paint for Convenient Traffic Marking & Painting Duty

ii. MMA Road Paint

Advanced 2-Component Material for Durable Road Marking & Painting

iii. MMA Rumble Paint

Innovative Alternative for Transverse Bar / Speed Breaker

iv. Epoxy Paint

High Density 2k Solventborne Material for Interior Coating

v. Polyurethane Paint

Premium 2k Material for Both Interior & Exterior Painting





Roadline Paint

Product Highlights

- Single Component Solvent Paint
- Excellent Abrasion Resistance
- Excellent Skid Resistant
- High Solid Content
- Fast Dry
- Superior adhesion

Product Variation

- Reflective Type
(Micronized Glass Beads)
- Non-Reflective Type

Packaging

- 5 liters
- 20 liters



Available Colour Options



White



Pink



Traffic Red



Yellow



Black



Blue



Green



Golden Yellow

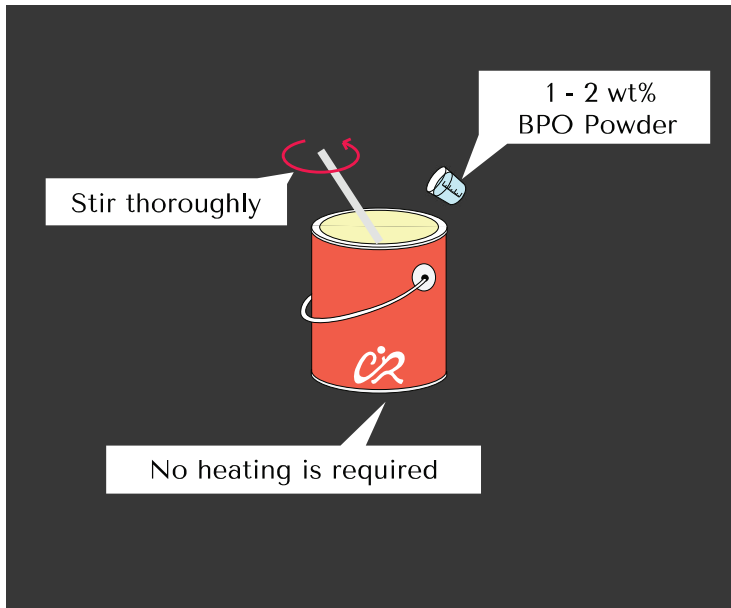
**Note: 1. Roadline Paint also available in Clear Coat (Topcoat) for concrete pavement protection.
2. The colour shades displayed are indicative and not precise representations of our actual paint colours.*





MMA Road Paint (2-component Material)

The Game Changer for Pavement Painting & Marking



Product Highlights

- Sustainable Alternative
- Fast Curing Speed (< 20 mins)
- High Skid Resistance
- Superior Durability

Product Variation

- Screed Grade
- Spray Grade
- Rollable Grade

Packaging

- 4.5 liters
- 18 liters



White



Blue



Red



Golden Yellow



Black



Brilliant Yellow



Green

- *Note:*
1. MMA Primer is available upon request. Subjected to T&C.
 2. Intermix glass beads content can be customized!
 3. Paint Colour can be customized! Contact us today for more information.
 4. The colour shades displayed are indicative and not precise representations of our actual paint colours.
 5. Detailed application instructions are available upon request.

MMA Rumble Paint a.k.a. Rumble Line

Specialized Screed Grade MMA Road Paint

Product Highlights

- Improved Alternative for Transverse Bar
- 2-Component 100% Solid Material
- High Skid Resistance
- Fast Curing (10-30 mins)
- Highly Durable

Suitable Substrates

- Premix Surface
- Concrete Surface
(Requires MMA Primer)

Packaging

- 18 liters set



Rumble Red



FAQ (MMA Road Paint)

1. What is MMA Road Paint?

MMA Road Paint (also known as Coldplastic material) is crafted from Methyl Methacrylate (MMA) resin. It is a durable and high-performance material known for its fast-curing properties, making it an ideal choice for road markings. By mixing it with BPO initiator, the paint will start to cure and harden, creating a tough finish & strong bond with the substrate. The curing process is irreversible.

2. What is the differences between MMA Road Paint & Thermoplastic Paint?

Between both material, MMA excels in performance and longevity. It has a simpler and safer application method without involving high temperature heating in long duration. Moreover, MMA is able to offer a broader colour palette for creating attractive and vibrant pavement markings. Once applied, the painted area can be opened for traffic flow within an hour.

3. How do I choose among the three variations of MMA products?

You can choose it based on your desired finishing thickness, texture and available equipment. In general, screed grade MMA will require at least a screed box to apply and is used mostly for thick line marking. As for spray and rollable grade MMA, both can be applied using trowel and roller. They are suitable for thin layer of pavement painting & line marking duty.

4. Is it possible to apply MMA myself?

Yes. Roller application can be easily applied by anyone with basic guidance. However, screeding and spraying application might require road marking/painting expert to handle. Anyway, you must take extra safety precautions such as wearing protective gear as it involves handling chemical materials and initiator. If necessary, we can provide guidance and training on handling and applying MMA products.





Epoxy Paint

Product Highlights

- 2-Component Solvent Paint
- Good Chemical Resistance
- Long - lasting
- Tough Finishing
- Highly Durable

Suitable Substrates

- Concrete Surface
- Metal Surface
- Steel & Galvanized Surface

Packaging

- 5 liters set (Includes Hardener)

Polyurethane Paint

Product Highlights

- 2-Component Solvent Paint
- Highly Durable & High Performance
- Good Chemical Resistance
- Good Abrasion Tolerance

Suitable Substrates

- Concrete Surface
- Metal Surface
- Steel & Galvanized Surface

Packaging

- 5 liters set (Includes Hardener)



White



Bright Blue



Traffic Red



Yellow



Black



Dark Blue



Oxide Red



Golden Yellow



Aluminium Grey



Medium Grey



Factory Green

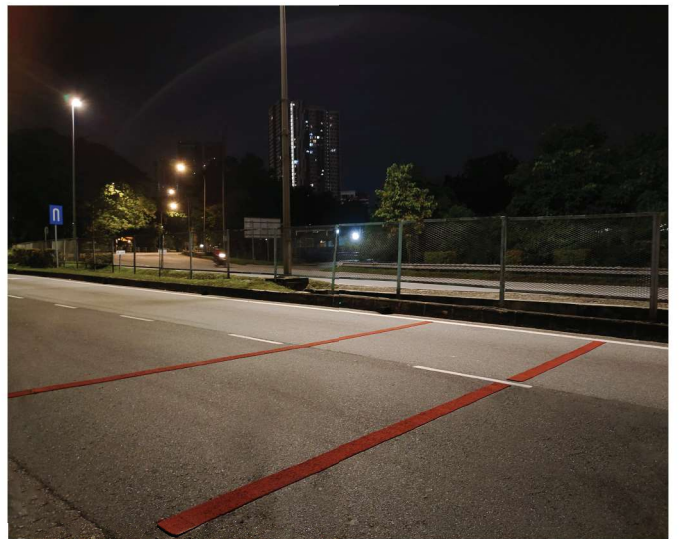
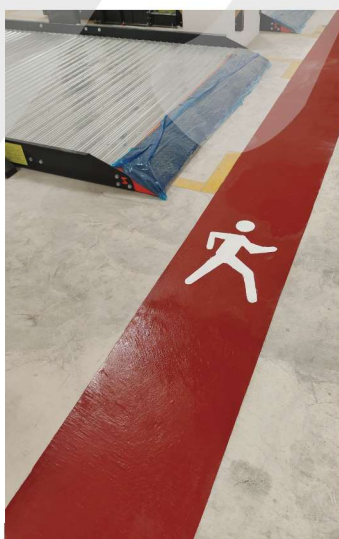
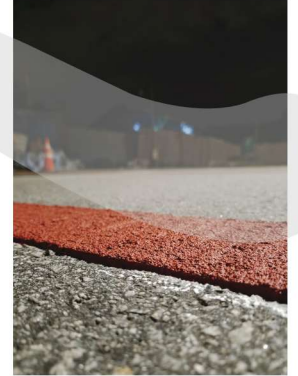


Dark Green

*Note: 1. PU Paint also available in Clear Coat (Topcoat).

2. Epoxy Primer (For Concrete Surface) is available upon request. Subjected to T&C.

3. The colour shades displayed are indicative and not precise representations of our actual paint colours.



Surface Preparation

Concrete Surfaces: The surface must be clean, dry, and free from oil, grease, dirt, mildew, and any other contaminants before painting. Avoid painting on substrates with high moisture content, as it may cause the paint film to bulge or blister. For new concrete floors, it is highly recommended to etch the surface with a hydrochloric acid solution. The concrete surface must have at least 25N/mm² of compressive strength to prevent surface defects after coating. Depending on the desired final paint thickness, surface grinding or shot blasting will be required to improve the adhesion of the coating to the surface.

Wood Surfaces: Surface must be clean, dry, and free from oil, grease, and any other contaminants. Sand the surface to be painted with an appropriate grade of sandpaper, and dust it off before applying the paint. Avoid painting on substrates with high moisture content and in humid environments.

Metal Surfaces: The surface must be clean, dry, and free from oil, grease, and any other contaminants. Mill scales and rusted surfaces should be sanded or wire brushed. Avoid painting on substrates with high moisture content or in a humid environment.

Painted Surfaces: Remove all loose, defective, and unstable paint film, as well as any dust and foreign materials from the surface. Sand and smoothen any rusted or uneven areas. Spot prime the surface if necessary. Avoid painting on substrates with high moisture content or in a humid environment.

Premix Surfaces: The surface must be clean, dry, and free from dirt, as well as any defective or poorly adhering materials. For painted surfaces, remove all loose, defective, and unstable paint, as well as any dust and foreign materials on the surface. For a new premix surface, it must be weathered for at least 30 days before painting.